



Custom Kickstand

BIG TWIN



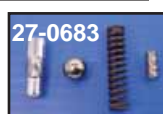
Wyatt Gatling Big Twin Kickstand Assembly features adjustable leg and hidden spring. Mounting is by 3 bolts on left front frame boss.
VT No. 27-0670

Weld On Stands



Weld On Kick Stand Assemblies feature chrome stand with hidden spring. Units fit tube size as noted.

VT No.	Size
27-0133	1 1/8"
27-0134	1 1/4"
27-1785	1 3/8"
27-0135	1 1/2"
27-0136	2"
27-0140	Stand Only
27-0683	Spring Kit



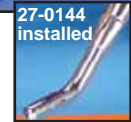
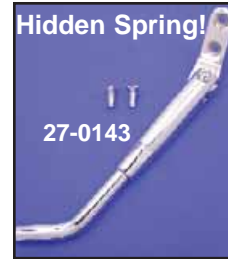
kick stand with forged flat end.

VT No. 27-0257



Universal Weld On Kick Stand Mount accepts XL style stands.
VT No. 51-0515

Weld On Kick Stand Assembly includes weld on type heavy duty mount, chrome spring & chrome



Chrome Adjustable Hidden Spring Kickstands mount to years listed with 2 bolts.

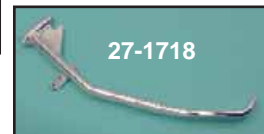
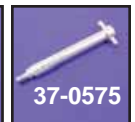
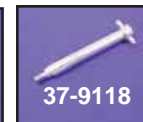
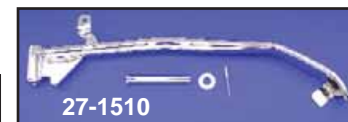
VT No.	Years	Model
27-0143	1988-99	ST
27-0144	2000-06	ST
27-0145	1982-94	FXR



Chrome Custom Kickstand Kit fits 2-bolt mounting. Unit includes stand, spring, mount and tapered bolts. 27-0552 features hidden spring.

VT No.	Years	Models
27-0515	1986-99	ST
27-0557	1986-99	ST
27-0552	1986-99	ST
27-0537	1982-94	FXR

FXR



Chrome Kickstands and Components for FXR-FXRS-FXLR

VT No.	Year	Item
27-1510	1982-90	Kickstand
37-9118	1982-90	Kickstand Pin
27-1718	1991-94	Kickstand
37-0575	1991-94	Kickstand Pin
13-0154	1982-90	Kickstand Spring, Chrome
13-9162	1991-94	Kickstand Spring, Chrome



Kickstand Pad has a 4" diameter surface. Fits in saddlebag or tool pouch to support stand on soft pavement, each.

VT No. 48-0630