



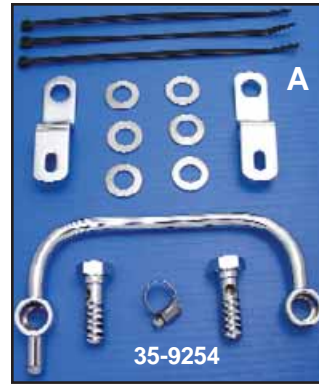
Sifton Braided Hose Crankcase Breather Kit features 3/8" I.D. stainless steel braided hose attached. Includes breather filter (with mounting stud), 24" hose and hardware. Air cleaner and carb support bracket must be purchased separately. Fits 1993-up Big Twin custom applications only.

VT No.	Item
35-0123	Kit
40-0570	Breather
35-0126	Bolt Kit

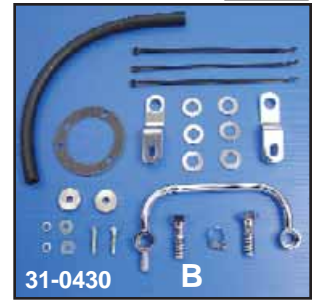


35-0126

Breather Kit



35-9254



31-0430



35-0670

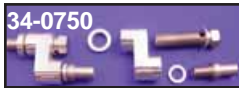
Air Cleaner Breather Manifold Kits to fit custom air cleaners to motors with the internal breathing system. Kit includes chrome breather manifold, chrome banjo bolts, chrome air cleaner support brackets, gaskets and instructions.

VT No.	#	OEM	Fits/Air Cleaner
35-9254	A	29310-93	1993-99 BT Round
35-1156			1993-up Round
31-0430	B	29283-92T	1993-up BT except FXD Teardrop
35-0670		Tube Only	1993-up BT
35-0731		Pair	Banjo Bolt only, 1992-99 EV
35-0732		Pair	Banjo Bolt only, 1999-up TC-88
14-0975		For Above	O-Ring



"Y" Breather Kit includes fittings to fit Ev, TC88 or XL 1991-up with breather. Drill and tap frame to connect.

VT No. 35-0578



Billet Air Cleaner Mount Set will mount air cleaners with flat backing plates to EV and TC-88 models. Offset Billet mounts feature built in breather passage that feeds inside air cleaner housing. Brackets can be rotated to proper position, then by drilling the back plate. Threaded breather nipples will fasten back plate to brackets.

VT No.	Year	Type
34-0750	1991-99	Ev
34-0751	2000-up	TC-88



Chrome Air Cleaner Support Brackets are for installing the custom round or teardrop air cleaners. Fits 84-92 Evo BT.

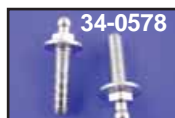
VT No. 31-3941



35-0731



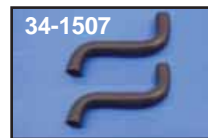
35-0732



34-0578

Breather Bolts fit 1993-up BT models. 35-0578 has thru vent holes.

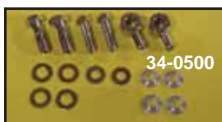
VT No.	Year	Type
35-0731	1992-up Ev	Hex
35-0732	1999-up TC-88	Hex
34-0578	1999-07 TC-88	Nipple
34-1509	2008-up TC-88	Nipple
35-1706	1992-up Ev	NPT
34-1507	1999-07	Rubber
34-1508	2008-up	Rubber



34-1507



34-1509



34-0500

Breather Bolt and Banjo Kit includes bolts for both Evo and TC88 applications and 2 banjos to accept 5/16" hose.

VT No.	Item
34-0500	Without tee
34-0808	With tee
37-0985	Ev Nylon Washers
37-0986	TC-88 Nylon Washers
37-0989	TC-88 Alloy Washers



34-0808



Breather Washer Set fits 1993-up BT, 1991-up XL models.

VT No. 35-0755



31-4041



31-4191



31-3962



31-0750

Chrome Air Cleaner Bracket for Evolution BT mounts to boss on engine heads to support custom air cleaners.

VT No.	Year
31-4041	1984-89
31-4191	1984-89 with choke bracket
31-3962	1990-92 CV
31-0750*	1993-up

*Note: To be used with breather kit.



1993-99 Ev Chrome Breather and Bracket Kit includes miniature screw in breather units that secure bracket to cylinder head. For use with CV type carb and air cleaner.

VT No. 34-0850



Sifton Mini-Breather Bolt Kit. Chrome breather cups have built in mount bolt for BT models.

VT No.	Year
40-0453	1992-99 BT
40-0454	TC88



Extended Breather Bolts allow mounting of air cleaner to breather bolt stand use with banjo set or cross line f or breather connection.

VT No.	Type
35-0136	TC88
35-0129	EV/XL
35-0144	Banjo Set
34-1186	Adapter



34-1186