



Chrome & Billet Clamp



Chrome Cable Clamps are 2-piece design for securing cables or wires to frame and forks. Sold each. As noted for cable type

VT No.	Size	Holes	Type
37-8911	1"	1	Clutch
37-9119	1"	2	Throttle
31-9943	1"	Slot	Throttle (2)
37-8976	1 1/4"	Slot	Throttle (2)
37-9501	1 1/2"	Slot	Throttle (2)
37-9502	1 3/4"	Slot	Throttle (2)
37-9503	2"	Slot	Throttle (2)
37-9396	1 1/4"	2	Throttle (2)
37-9359	1 1/4"	1	Clutch
37-8912	35mm	1	Throttle
37-8913	35mm (1 3/8")	1	Clutch
37-8914	39mm	1	Speedo
37-9341	41mm	1	Speedo
31-1010	49mm	1	Clutch



Chrome Cable Clamps. Unique two piece design allows easy installation. Swivel head design allows more natural cable routing without excessive bending. Rubber sleeves protect painted surfaces and cable housing. 1" clamps fit handlebars and after-market frames.

VT No.	Size	Holes	Type
31-0295	1 1/4 - 1 1/2"	Single	Throttle/Clutch
31-0296	1 1/4 - 1 1/2"	Dual	Throttle/Clutch
31-0297	1 - 1 1/8"	Single	Throttle/Clutch
31-0336	1 - 1 1/8"	Dual	Throttle/Clutch
31-0337		Single	Cable Holder for 15/64" (7mm) 9/32" (8mm) and 11/32" (9mm) cables
31-0338	As Above	Dual	Cable Holder

Chrome Handlebar Wiring Clips snap into late model stock bars with holes at bends. 10 pk.

VT No.	OEM	Size, I.D.
36-0613	56073-83	3/8"
36-0614	70345-84	1/2"

Black Cable Clamps fits 1 1/8" to 1 1/4" bars.

VT No.	Type
37-1511	Throttle
37-1512	Clutch



Chrome Dual Throttle Cable Separator is two piece design. 2 holes.
VT No. Style
31-9942 Oval
36-0588 Maltese

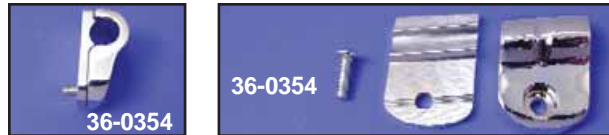


Chrome Billet Clutch Cable Mount fits ST models.
VT No. 31-0945



Chrome Billet Brake Clip.

VT No.	Line
36-0351	Stock
36-0352	SS



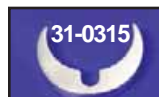
Chrome Billet Cable Clamps.

VT No.	OEM	Type	Model	Style
36-0354	91360-03	Clutch Cable	ST	SS
36-0351	91336-03	Brake Line	ST	Stock
36-0355	91367-03	Brake Line	FXD	Stock



Chrome Billet Cable Clamps sold each.

VT No.	Size	Type
37-0883	1"	Throttle, Single
37-0884	1"	Throttle, Dual
37-0885	1"	Clutch
37-0886	1 1/8"	Clutch
37-0887	41mm	Clutch
37-0897	39mm	Clutch
37-0888	—	Speedo to Fender



41mm Push On Fork Tube Clamps to secure speedo cables and brake lines.

VT No.	Style
31-0315	Smooth
31-0316	Groove



Cable Clip with 5/16" hole snaps on fork tubes to hold cables and brake hoses.

VT No.	MM
24-0497	41mm
24-1024	49mm