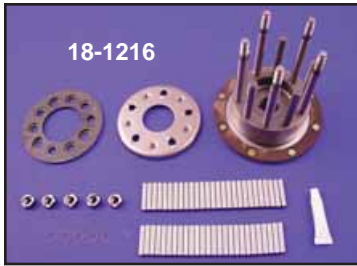




Clutch Hub



Big Twin 5 Stud Clutch Hub fits 1941-E84, features 53 long rollers, outer spring plate and nuts.
VT No. 18-1216



Clutch Hub Nut and Seal Kit for use on all 1941-84 Big Twins. Includes nut, seal, and lock tabs. Packaged.

VT No.	OEM	Item
17-0121		Kit Complete
14-0103	12014	Seal, 5 pk
12-0508	37496-65	Nut, each
17-0904	37503-41	Lock, 10 pk
12-0208	37523-15	Key, 10 pk



The Big Fixx for 74 & 80 Clutch contains 52 roller bearings which take the place of the offset roller bearings and bearing retainer, resulting in a smoother more positive, wobble-free clutch operation.

VT No. 20-0229



Sifton Retainer Kit includes a clutch drum retainer designed to smooth clutch operation of all 1941-84. The retainer cures the problem of the uncontrollable "Grabby Clutch" found in the clutch system.

VT No.	Item
18-3116	Retainer Kit
12-1195	Snap rings

18-3116 Installed



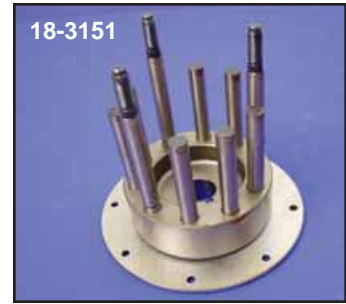
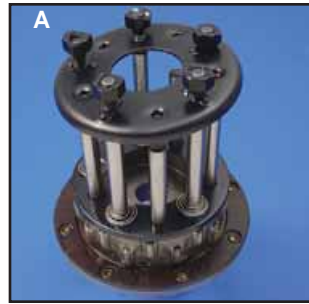
Chrome Pressure Plate Kit fits 3 stud hub, includes inner and outer plate and 10 springs.

VT No. 18-0565



1941-84 Spring Collar Assembly eliminates wobbly pressure plate, gives a balanced spring load, providing a smooth positive clutch operation with a minimum number of adjustments. The nuts go through the spring collar which strengthen and stabilize it. Available for 3 and 5 stud hubs. Outer spring plate available separately.

VT No.	Item
20-0300	Kit, 3 Stud
20-0454	Kit, 5 Stud
18-8242	Plate, 3 Stud
18-0795	3 Pc Nut Set
20-0332	Polished Outer Plate
20-0333	Chrome Outer Plate



Big Twin Clutch Hubs for 1941-84 available assembled with rollers, liner, top plate and adjusting n uts. Also available as bare hub only.

VT No.	#	Item
18-3153	A	Complete 3 Stud
18-3154	A	Complete 5 Stud
18-3151*		3 Stud
18-3150*		5 Stud
18-3111	C	Outer Plate 3 Hole, Black
18-3235	C	As Above, Chrome
18-3112	C	Outer Plate 5 Hole, Black
18-3236	C	As Above, Chrome
18-3113	C	Outer Plate 10 Hole, Black
18-1125	B	Hub Liner, Stock w/rivets
18-3124	B	Hub Liner, Nyla-tron w/rivets
37-8807		Rivets for Liner

Clutch Hub Rollers (100)

VT No.	Size
12-4590	STD
12-4591	.0002

*Note: Sold as bare hubs.



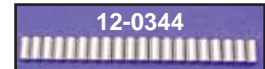
1941-84 Big Clutch Hub Hardware Kit includes 20 rollers with cage, liner with rivets, retainer springs, outer pressure plate with either 3 or 5 adjusting n uts.

VT No.	Hub Type
18-3638	3 Stud
18-3639	5 Stud



Sifton Clutch Springs Sets are heavy duty 10 piece sets. Red coated.

VT No.	Fits
13-0788	1941-67
13-0789	1968-84



Rollers Only.

20 Pack	100 Pack	OEM	Size
12-0344	12-4590	9540A	STD.
12-0363	12-4591	9541	.0002
12-0364	—	9542	.001



18-3611

Clutch Stud Nut and Plate Kit includes slotted nuts, roller retainer plate, outer pressure plate and retainer springs in proper amounts for hubs listed 1941-84.

VT No.	Item
18-3611	3 Stud, Stock
18-3620	5 Stud
18-3621	10 Stud



Chrome Clutch Spring Set use on 1941-84, when exposed on belt drive models. Ten pieces per kit. These are our late style springs with durable chrome finish.

VT No. 13-0200