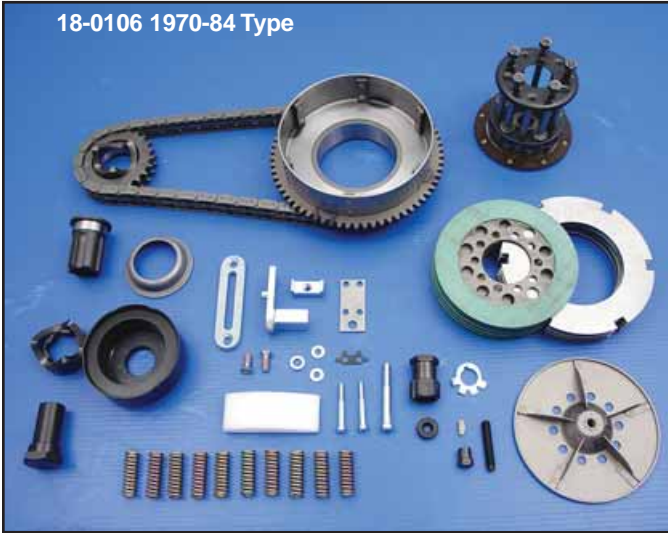




Primary Chain

Primary Chain Drive System

18-0106 1970-84 Type



Primary Chain Drive Systems for Big Twins include 76 or 82 link Diamond Primary Chain, chain shoe adjuster assembly, clutch drum basket with starter ring gear and steel & fiber clutch plates with pressure plate assembly. Correct front compensator sprocket assembly includes all parts necessary for installation. Including sprocket nut. 5 Speed Big Twin Softail models and all pre1985 FLH-FX 4-Speeds require 82 link primary chains, 1980-up FLT-FXR 5-Speeds require 76 link primary chains.

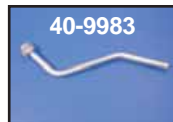
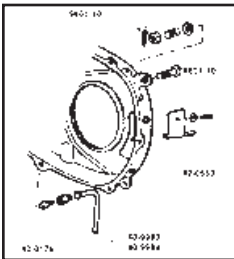
82 Links	76 Links	Year
18-0106*	18-0110*	1970-84
18-0107*	—	1965-69
18-0108*	—	1955-64
18-0117	—	1955-64
18-0109	—	1936-54

*Note: Units include compensator front sprocket assembly.

Primary Hardware

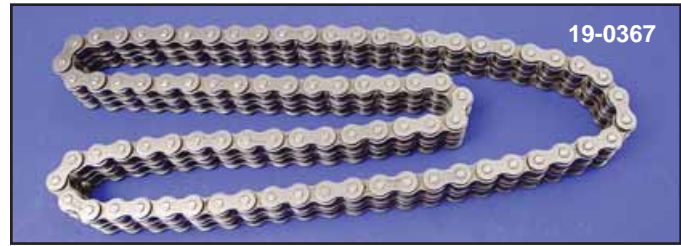


Chain Oil Kit. Cad plated oiler body, 63607-54, oiler adjusting screw, 63610-53, nut and brass washer used on 1954-62 Panheads.
VT No. 2321-4

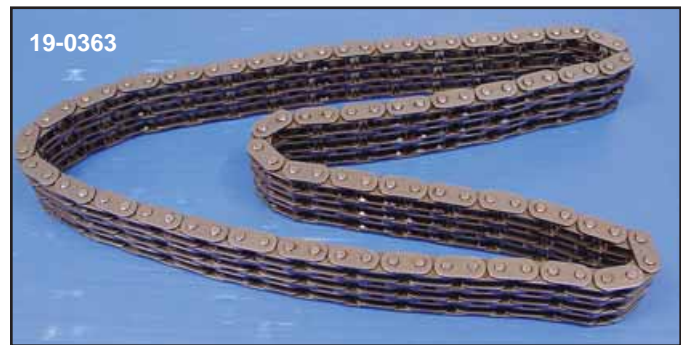


1954-64 Rear Chain Oiler Kit replaces 63591-62 to fit on rear of inner primary cover includes screw.

VT No.	Item
42-0653	Rear Chain Oiler
40-0176	Oil Fitting
40-9983	Oil Drain 1936-57
40-9984	Oil Drain 1958-64



Replica Primary Chain features Figure '8' Side Plates for reduced weight on Early models!



Diamond Endless Primary Chains.

VT No.	Size	Fits
19-0367	428x2-82	1936-64 BT 74 & 80, Figure 8
19-0360	428 x 2 x 82	1965-84 BT (Oval)
19-0392	428x2x80	Special Length
19-0363	35x3-92	1952-56 K-Model
19-0364	35x2-96	1938-up Servi-Car
19-0365	35x2-100	1929-52 Solo
19-0366	428x2-88	1930-36 VL S. Car
19-0380	428x2-90	1930-36 VL Solo
19-0361	428x2-76	1974-06 FLT/FXR



Primary Chain Connector Links. Sold each. Size 428 x 2 chain. Fits all Big Twin.
VT No. 19-0377



Tsubaki Primary Chain has shot-peened, heavy-duty side plates and solid roller construction.

VT No.	Fits	Links
19-0549	1980-06 FLT	76
19-0548	1980-06 FXWG + ST	82