



# Inner Primary Cover 1936-64



42-0644



42-0643



42-0699



Oil Guard Detail



42-0646



42-0645



42-0672



42-0862

**Replica Inner Primary Covers** with drain fitting installed. 42-0699 includes sprocket oil guard. Oil guard may have to be removed on some foot shift applications.

Black	Chrome	OEM	Year
42-0644	42-0643	60626-36	1936-54
42-0699	—	60626-36	1936-54
42-0646	42-0645	60620-55	1955-57
42-0672	42-0862	60620-58B	1958-64



42-0617



42-0621



42-0619



42-0622



42-0620



42-0623

**Steel Inner Primary Covers** for 1936-54 has small hole at motor end, 1955-69 has large hole for Splined sprocket shaft. The 42-0623 is slightly deeper to mount to 1965-69 motor cases.

VT No.	Years	Finish
42-0621	1936-54	Chrome
42-0619	1936-54	Black
42-0622	1955-64	Chrome
42-0620	1955-64	Black
42-0623	1965-69	Chrome
42-0617*	1970-84	Alternator type

\*Note: Allows use of 1955-64 type compensator outer covers on alternator, electric start must be sacrificed.



1936-54



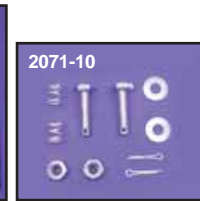
1955-64

**Inner Primary Mounting Kits** contain all hardware to mount tin inner primary to engine on Big Twins.

VT No.	Years
7811-14	1936-54
7812-12	1955-64



9601-10



2071-10

**Inner Primary Mount Kit** includes hardware to mount inner to oil tank and frame.

VT No.	Finish
9601-10	Parkerized
2071-10	Chrome



40-9984

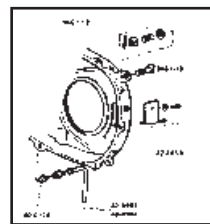


40-9983



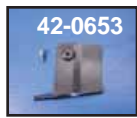
**Inner Primary Cover Drain Tube** for sheet metal early BT primary. Tube with nut.

VT No.	OEM	Year/Type
40-9983	60546-36	1937-58 Rigid
40-9984	60546-59	1959-64 SA



**1954-64 Rear Chain Oiler Kit** replaces 63591-62 to fit on rear of inner primary cover includes screw.

VT No.	Item
42-0653	Rear Chain Oiler
40-9983	Oil Drain 1936-57
40-9984	Oil Drain 1958-64



42-0653



**Chain Oil Kit.** Cad plated oiler body, 63607-54, oiler adjusting screw, 63610-53, nut and brass washer used on 1954-62 Panheads.

VT No. 2321-4



15-0408



15-0642



**Primary Gasket Kit** includes 3 cork gaskets for 1936-64 Big Twin Outer Primary Covers, includes 60540-36, 60567-36 and 60565-36.

**Cork Primary Cover Gaskets** for 1936-64 Big Twin.

James	GB	OEM	Item
15-0905	15-0175	60540-36	Primary
15-0919	15-0177	60565-36	Clutch Cover
15-0920	15-0178	60567-36	Inspection
15-0180	15-0408	60629-55	Inner Primary (55-64)
15-0844	15-0642	—	Kit Complete, 36-54
—	15-0417	—	Kit Complete, 36-64



42-0618



49-0759

**Reinforcement Ring** fits inner primary.

VT No.	Year
42-0618	1936-54
49-0759	1955-64