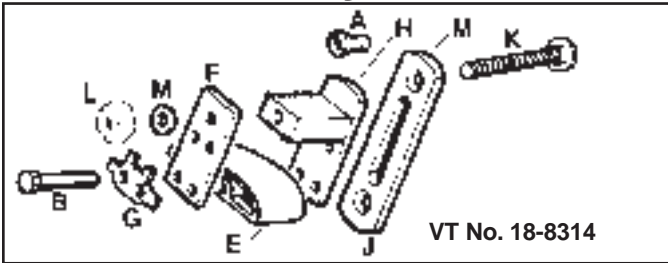




Chain Tensioner Primary Chain



VT No. 18-8314



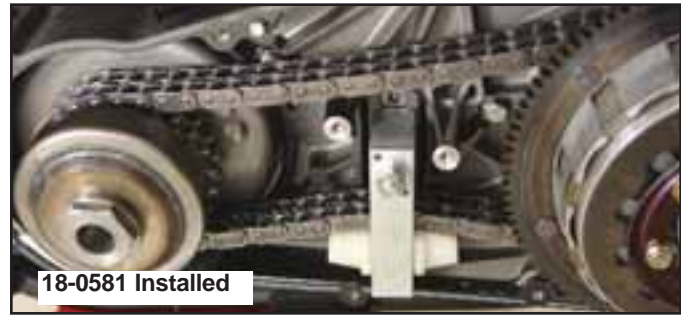
28-0568



28-0225



18-8314

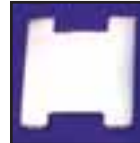


18-0581 Installed



York Chain Adjuster Kits feature automatic self adjusting by use of spring loaded shoe.

VT No. Year
18-0580 1965-00
18-0581 2001-05



18-0581



18-0580

Chain Tensioner Parts fits Big Twin models.

VT No.	#	OEM	Type	Years
18-8314	All	All	Complete Kit	1985-2000
18-8320	All	All	Complete Kit	2001-up
18-3217	B-C-F-G	B-C-F-G	Hardware Kit	
37-9030	A	1783	Screw, 10 pack	
37-8801	B	3862B	Bolt, 5 pack	
18-3682*	C	4401W	Hex Bolt, each	
28-0225	E	39976-65B	Nylon Pad	1965-2000
28-0568	E	Red	Nylon Pad	1965-2000
28-0234	E	39976-01	Nylon Pad	2001-up
17-0915	G	39996-65	Lock, 10 pack	
18-3218	H	39990-65	Shoe Mount Bracket	1965-2000
18-8321	H	39990-01	Shoe Mount Bracket	2001-up
18-3219	F	39993-65	Plate	
18-3622	I	39992-65A	Nut and	
	J	39998-65	Anchor Plate	
18-3634	J	—	Anchor Plate w/carriage bolt (K)	
37-8802	K	5444	Carriage Bolt, 5 pack	
18-3223	I	39992-65A	Nut Only	

*Note: Early style Hex Bolt, screws into 18-3223 Nut.



York Big Twin Hydraulic Primary Chain Tensionator™ features a hydraulic valve which controls the motion of the submerged piston which constantly keeps the chain in tension for 1965-up Big Twins.

VT No. Item

18-0120 Chain Tensionator
18-0128 Chain Tensioner Shoe

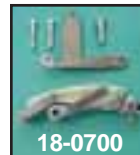
Installation Instructions

- Remove the primary cover and check the chain tension.
- Remove the old detent adjuster shoe assembly.
- Install the York Chain Adjuster Kit shoe assembly.
- Adjust the chain tension to the correct specification.
- Reinstall the primary cover and check the chain tension.

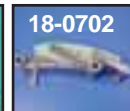


M-6 Self Adjusting Chain Tensioner fits Big Twin 4 and 5-Speed models with wet clutch. Replaces factory type detent adjuster shoe assembly. Tensioner kit includes all hardware and instructions for complete conversion.

VT No. Year
18-3662 1965-2000
18-3681 Nylon Pad



18-0700



18-0702

Automatic Spring Loaded Chain Tensioner.

VT No. Year
18-0700 1985-05 BT
18-0702 2006-up FXD,
2007-up FXST